

## Operating

Differential pressure indicator indicates pressure difference between input and output pressure of compressed air filter.

The green field on the indicator indicates that the filter cartridge in the compressed air filter is clean. When the red field is becoming bigger that indicates that filter cartridge is dirty.

## Maintenance

Once per year make a visual check of the pressure drop indicator and make sure there is no visual damage or leakage.

## Warranty exclusion

The guarantee shall be void if:

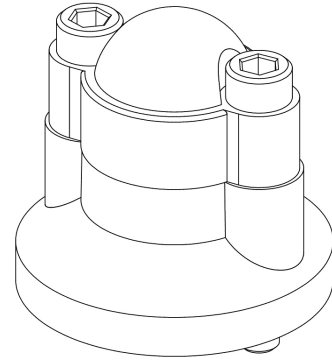
- < The operating instructions were not followed with respect to installation, initial commissioning and maintenance.
- < The unit was not operated properly and appropriately.
- < The unit was operated when it was clearly defective.
- < Non-original spare parts or replacement parts were used.
- < The unit was not operated within the permissible technical parameters.
- < Unauthorised constructional changes were made to the unit or if parts of the unit that may not be opened were dismantled.

OMEGA AIR d.o.o. Ljubljana  
Cesta Dolomitskega odreda 10  
SI-1000 Ljubljana, Slovenia  
Tel.: +386 (0)1 200 68 00  
Fax.: +386 (0)1 200 68 50  
E-mail: info@omega-air.si  
www.omega-air.si



# Installation and operating manual

PDI 16



Please read the following instructions carefully before installing the product into service. Trouble free and safe operating of the unit can only be guaranteed if recommendations and conditions stated in this manual are respected.

## Operating

Differential pressure indicator indicates pressure difference between input and output pressure of compressed air filter.

The green field on the indicator indicates that the filter cartridge in the compressed air filter is clean. When the red field is becoming bigger that indicates that filter cartridge is dirty.

## Maintenance

Once per year make a visual check of the pressure drop indicator and make sure there is no visual damage or leakage.

## Warranty exclusion

The guarantee shall be void if:

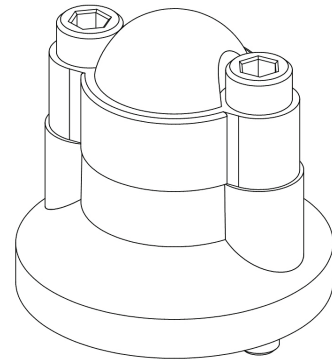
- < The operating instructions were not followed with respect to installation, initial commissioning and maintenance.
- < The unit was not operated properly and appropriately.
- < The unit was operated when it was clearly defective.
- < Non-original spare parts or replacement parts were used.
- < The unit was not operated within the permissible technical parameters.
- < Unauthorised constructional changes were made to the unit or if parts of the unit that may not be opened were dismantled.

OMEGA AIR d.o.o. Ljubljana  
Cesta Dolomitskega odreda 10  
SI-1000 Ljubljana, Slovenia  
Tel.: +386 (0)1 200 68 00  
Fax.: +386 (0)1 200 68 50  
E-mail: info@omega-air.si  
www.omega-air.si



# Installation and operating manual

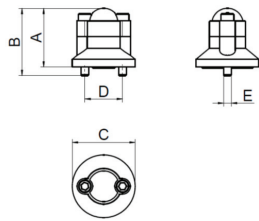
PDI 16



Please read the following instructions carefully before installing the product into service. Trouble free and safe operating of the unit can only be guaranteed if recommendations and conditions stated in this manual are respected.

### Technical data

Operating temperature	1,5 - 65 °C (35 - 149 °F)
Operating pressure (Standard version)	0 - 16 bar(g) (0 - 232 psi)
Mass	0,03 kg
Measuring range: -green area	0 - 0,6bar /0 - 8,7psi
-red area	0,6 - 0,9bar /8,7 - 13psi
Typical installation	Head of filter housing



There is Technical datasheet available. For additional technical specification, contact manufacturer.

### Safety instructions

**Operator/user of the unit should make himself familiar with the function, installation and start-up of the unit through these operating instructions.**

It is essential to follow these safety notes in order to ensure trouble-free operation of the unit.

All the safety information is always intended to ensure your personal safety.

- ⌋ Depressurize the system before carrying out any work on the piping.
- ⌋ Installation and maintenance work may only be carried out when the device is not under pressure.
- ⌋ Installation and maintenance work may only be carried out by trained and experienced stuff.
- ⌋ Do not exceed max. operating pressure or operating temperature range (see data label).
- ⌋ Do not use the device in hazardous areas with potentially explosive atmospheres.
- ⌋ Use original spare parts only.
- ⌋ Use the device for the appropriate purpose only.



### Appropriate use

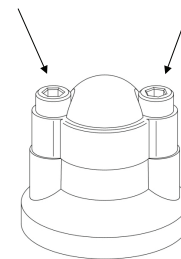
**!** PDI series pressure drop indicators are intended exclusively for indicating pressure drop between inlet and outlet pressure of filter. This appliance must be used only for the purpose for which it was specifically designed. All other uses are to be considered incorrect.

The manufacturer cannot be held responsible for any damage resulting from improper, incorrect or unreasonable use.

Use genuine spare parts only. Any damage or malfunction caused by the use of unguenuine parts is not covered by Warranty or Product Liability.

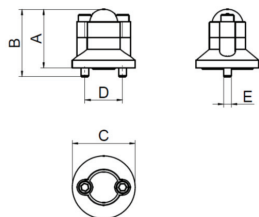
### Installation

- ⌋ Before connecting the PDI 16 to the filter head you must take off the inner part of circular black plate, which is located on top of the filter head (relevant at AF filter series, at all other filter series make sure that mounting surface of filter head is flat, smooth and cleaned).
- ⌋ Unscrew two screws (1/8") which are located on the top of filter head.
- ⌋ Before connecting the PDI 16 to the filter head, you must unscrew two screws M5x35 for 5mm (see picture below)
- ⌋ Put PDI on filter head. Arrow on the PDI data plate indicates flow direction.
- ⌋ Lubricate screw thread with Vaseline.
- ⌋ Tighten screws alternately (apply torque of 4-5Nm).
- ⌋ After completed installation filter set is ready for operation. Slowly apply pressure and make sure there is no leakage.



### Technical data

Operating temperature	1,5 - 65 °C (35 - 149 °F)
Operating pressure (Standard version)	0 - 16 bar(g) (0 - 232 psi)
Mass	0,03 kg
Measuring range: -green area	0 - 0,6bar /0 - 8,7psi
-red area	0,6 - 0,9bar /8,7 - 13psi
Typical installation	Head of filter housing



There is Technical datasheet available. For additional technical specification, contact manufacturer.

### Safety instructions

**!** Operator/user of the unit should make himself familiar with the function, installation and start-up of the unit through these operating instructions.

It is essential to follow these safety notes in order to ensure trouble-free operation of the unit.

All the safety information is always intended to ensure your personal safety.

- ⌋ Depressurize the system before carrying out any work on the piping.
- ⌋ Installation and maintenance work may only be carried out when the device is not under pressure.
- ⌋ Installation and maintenance work may only be carried out by trained and experienced stuff.
- ⌋ Do not exceed max. operating pressure or operating temperature range (see data label).
- ⌋ Do not use the device in hazardous areas with potentially explosive atmospheres.
- ⌋ Use original spare parts only.
- ⌋ Use the device for the appropriate purpose only.



### Appropriate use

**!** PDI series pressure drop indicators are intended exclusively for indicating pressure drop between inlet and outlet pressure of filter. This appliance must be used only for the purpose for which it was specifically designed. All other uses are to be considered incorrect.

The manufacturer cannot be held responsible for any damage resulting from improper, incorrect or unreasonable use.

Use genuine spare parts only. Any damage or malfunction caused by the use of unguenuine parts is not covered by Warranty or Product Liability.

### Installation

- ⌋ Before connecting the PDI 16 to the filter head you must take off the inner part of circular black plate, which is located on top of the filter head (relevant at AF filter series, at all other filter series make sure that mounting surface of filter head is flat, smooth and cleaned).
- ⌋ Unscrew two screws (1/8") which are located on the top of filter head.
- ⌋ Before connecting the PDI 16 to the filter head, you must unscrew two screws M5x35 for 5mm (see picture below)
- ⌋ Put PDI on filter head. Arrow on the PDI data plate indicates flow direction.
- ⌋ Lubricate screw thread with Vaseline.
- ⌋ Tighten screws alternately (apply torque of 4-5Nm).
- ⌋ After completed installation filter set is ready for operation. Slowly apply pressure and make sure there is no leakage.

