

PRESSURE DROP INDICATOR – PDI 16

DESCRIPTION

Pressure drop indicator PDI 16 has been developed to indicate pressure drop across the filter element in compressed air system ⁽¹⁾. It detects when the filter cartridge is clogged and should be replaced. PDI 16 is typically installed on the head of the filter housing.



APPLICATIONS ⁽²⁾

- Automotive
- Electronics
- Food & Beverage
- Chemical
- Petrochemical
- Plastics
- Paint
- General industrial application

⁽¹⁾ For any other technical gas please contact us or your local dealer

⁽²⁾ PDI 16 can be used in variety of applications. For applications not listed please contact us or your local dealer.

TECHNICAL SPECIFICATION ⁽³⁾

Operating temperature	1,5 - 65 °C	35 - 149 °F
Operating pressure (Standard version)	0 – 16 bar(g)	0 - 232 psi
Mass	0,03 kg	0.07 lbs
Indication range	Green area	0 – 0,6 bar
	Red area	0,6 – 0,9 bar
		0 – 8.7 psi
		8.7 – 13 psi
Typical installation	Head of filter housing	

⁽³⁾Standard version, at 7barg

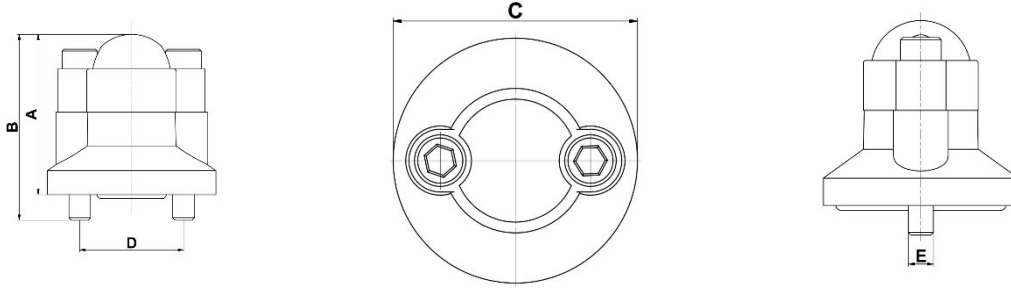
MATERIALS ⁽⁴⁾

Housing material	PA6(Polyamide) 30% glass fibres, PA12
Housing sealing	NBR
Mechanism	ABS, NBR, Stainless steel
Screws	Steel – zinc plated

⁽⁴⁾Standard version

DIMENSIONS


	[mm]	[inch]
A	38	1.49
B	43	1.69
C	40	1.57
D	24	0.94
E	M5	



MAINTENANCE

Once per year make a visual check of the pressure drop indicator and make sure there is no visual damage or leakage.

INFORMATION IN THIS DOCUMENT IS SUBJECT TO CHANGE WITHOUT NOTICE

 <p>BUREAU VERITAS</p>	<p>Our quality management system is certified by BUREAU VERITAS in conformity with ISO 9001:2015 Reg. number: 200285</p>	
--	--	--