

MDH 50

DIFFERENTIAL PRESSURE DROP INDICATOR

DESCRIPTION

Differential pressure drop indicator MDH 50 has been developed for accurate indication of pressure drop across the filter element in compressed air system ⁽¹⁾. MDH 50 is optimised for installation on the head of the filter housing.

APPLICATIONS ⁽²⁾

- Automotive
- Electronics
- Food & Beverage
- Chemical
- Petrochemical
- Plastics
- Paint
- General industrial application

⁽¹⁾ For any other technical gas please contact us or your local dealer

⁽²⁾ MDH 50 can be used in variety of applications. For applications not listed please contact us or your local dealer.



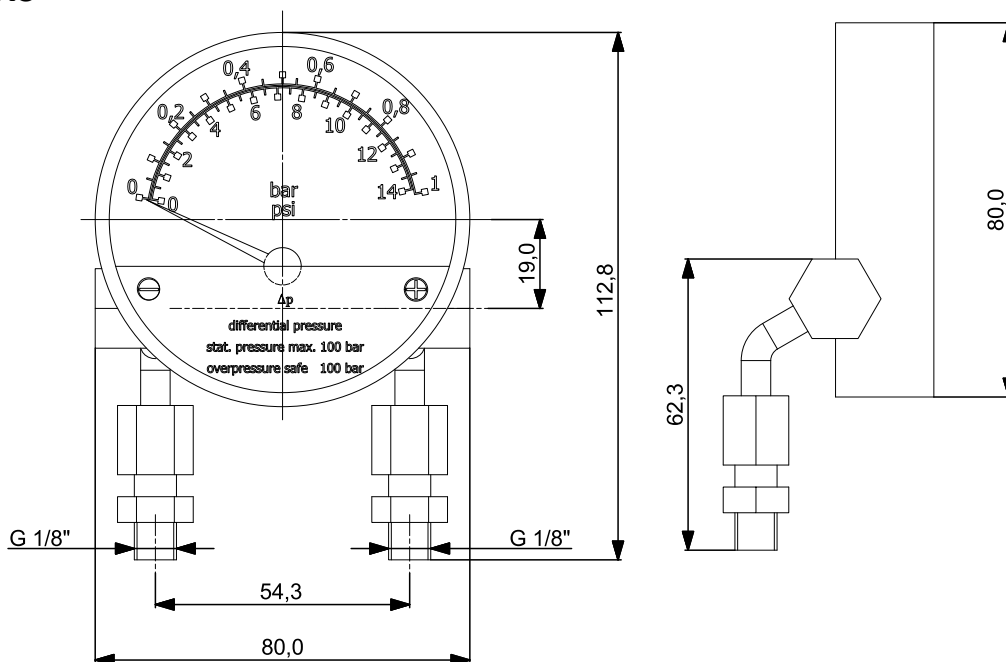
TECHNICAL SPECIFICATION

Ambient temperature	1,5 - 60 °C	35 - 140 °F
Measuring range	0 – 1bar	0 – 14,7 psi
Static pressure	100bar	1469psi
Environmental protection	IP 54	
Accuracy class	±3% of full scale	
Connection	2X G 1/8 male	
Overpressure safety	Either side to maximum working pressure	

MATERIALS

Pressure chamber with connection	Stainless steel
Pressure element	Stainless steel
Magnetic piston	Stainless steel, hard-ferrit
Dial pointer	Aluminium
Display housing	Aluminium, die-casting
Window	Clear non-splintering plastic

DIMENSIONS

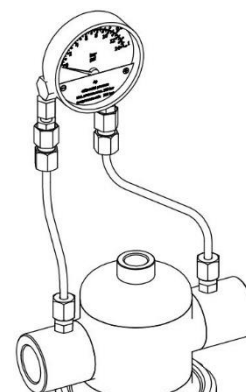


MAINTENANCE


Once per year make a visual check of the pressure drop indicator and make sure there is no visual damage or leakage.

NOTE

Additional connection tubes only available in MDHI 50 KIT. Use of MDHI 50 KIT only with appropriate connections on a filter housing.



INFORMATION IN THIS DOCUMENT IS SUBJECT TO CHANGE WITHOUT NOTICE

	<p>Our quality management system is certified by BUREAU VERITAS in conformity with ISO 9001:2015 Reg. number: 200285</p>	
---	--	--